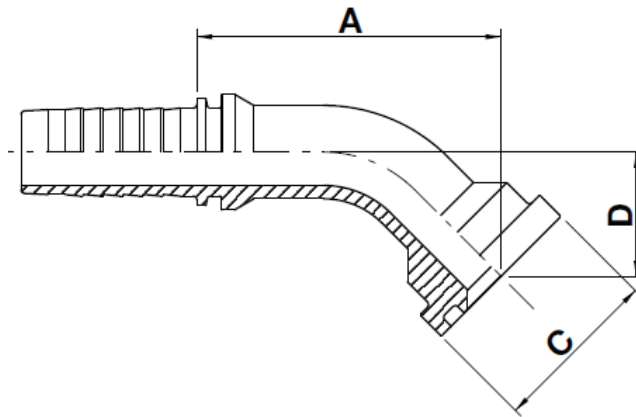


F-FL45

Code 61 Flange 45° Bend



USE WITH TEXCEL HOSE SERIES

HB3K, HB3K-XT, HB4K, HB4KXT, HB5K, HB5K-XT, HB6K, HBR1, HBR2, HHT2, HS4K, HS5K, HS5KXT, HS6K

TWO-PIECE NO-SKIVE FITTING INSERT

CODE	HOSE			FLANGE	A		C		D		Box Qty
	SIZE	INCH	DN		[in]	[mm]	[in]	[mm]	[in]	[mm]	
F-1212-FL45	12	¾	19	¾"	2.70	68.5	1.50	38.0	1.10	27.9	20
F-1216-FL45	12	¾	19	1"	2.77	70.5	1.75	44.4	1.14	29.0	15
F-1616-FL45	16	1	25	1"	2.93	74.4	1.75	44.4	1.06	27.0	10
F-1620-FL45	16	1	25	1 ¼"	3.00	76.2	2.00	50.8	1.14	29.0	10
F-2020-FL45	20	1 ¼	31	1 ¼"	3.46	88.0	2.00	50.8	1.22	31.1	10